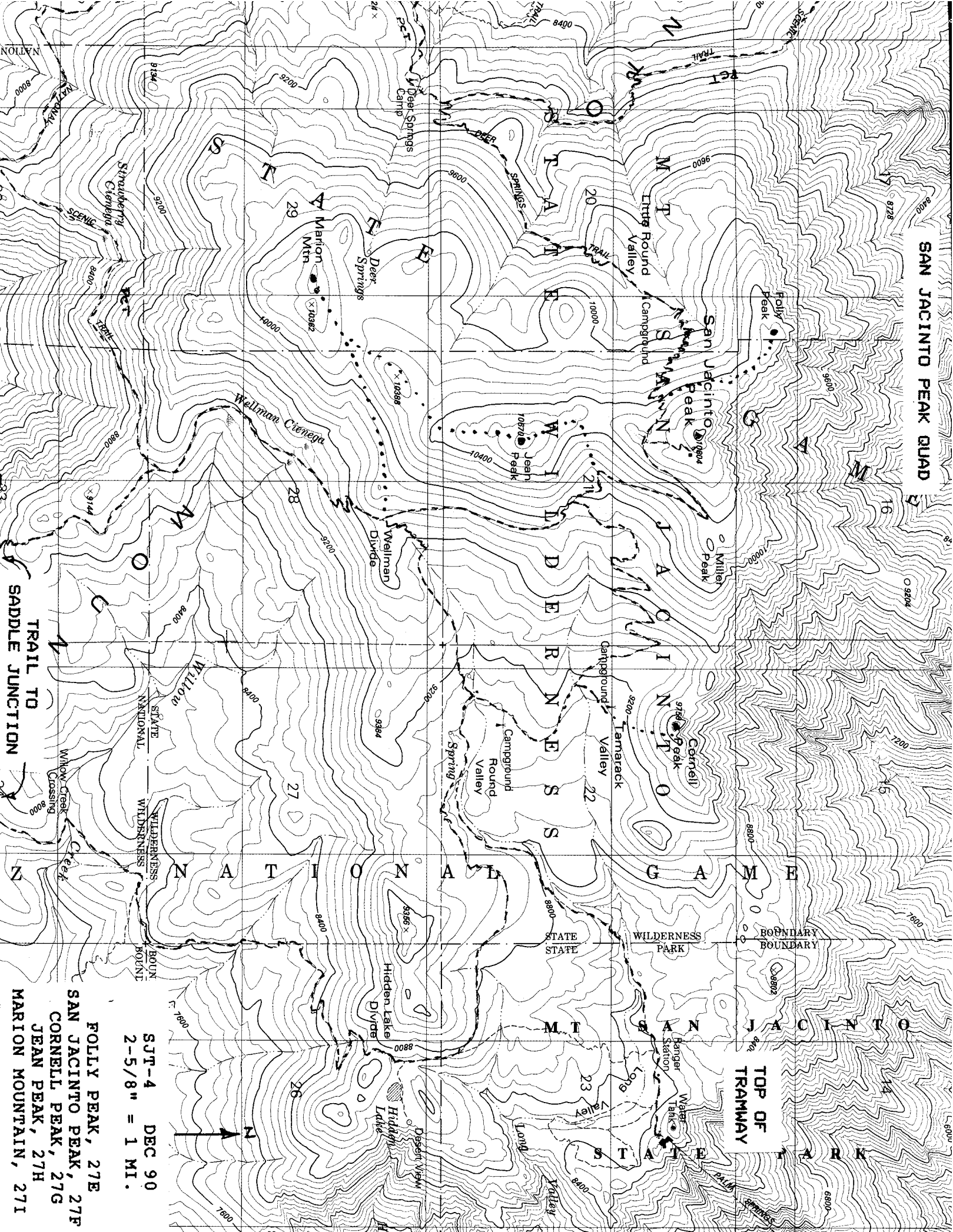


SAN JACINTO PEAK QUAD



TRAIL TO  
SADDLE JUNCTION

- FOLLY PEAK, 27E
- SAN JACINTO PEAK, 27F
- CORNELL PEAK, 27G
- JEAN PEAK, 27H
- MARION MOUNTAIN, 27I

SJT-4 DEC 90  
2-5/8" = 1 MI.

