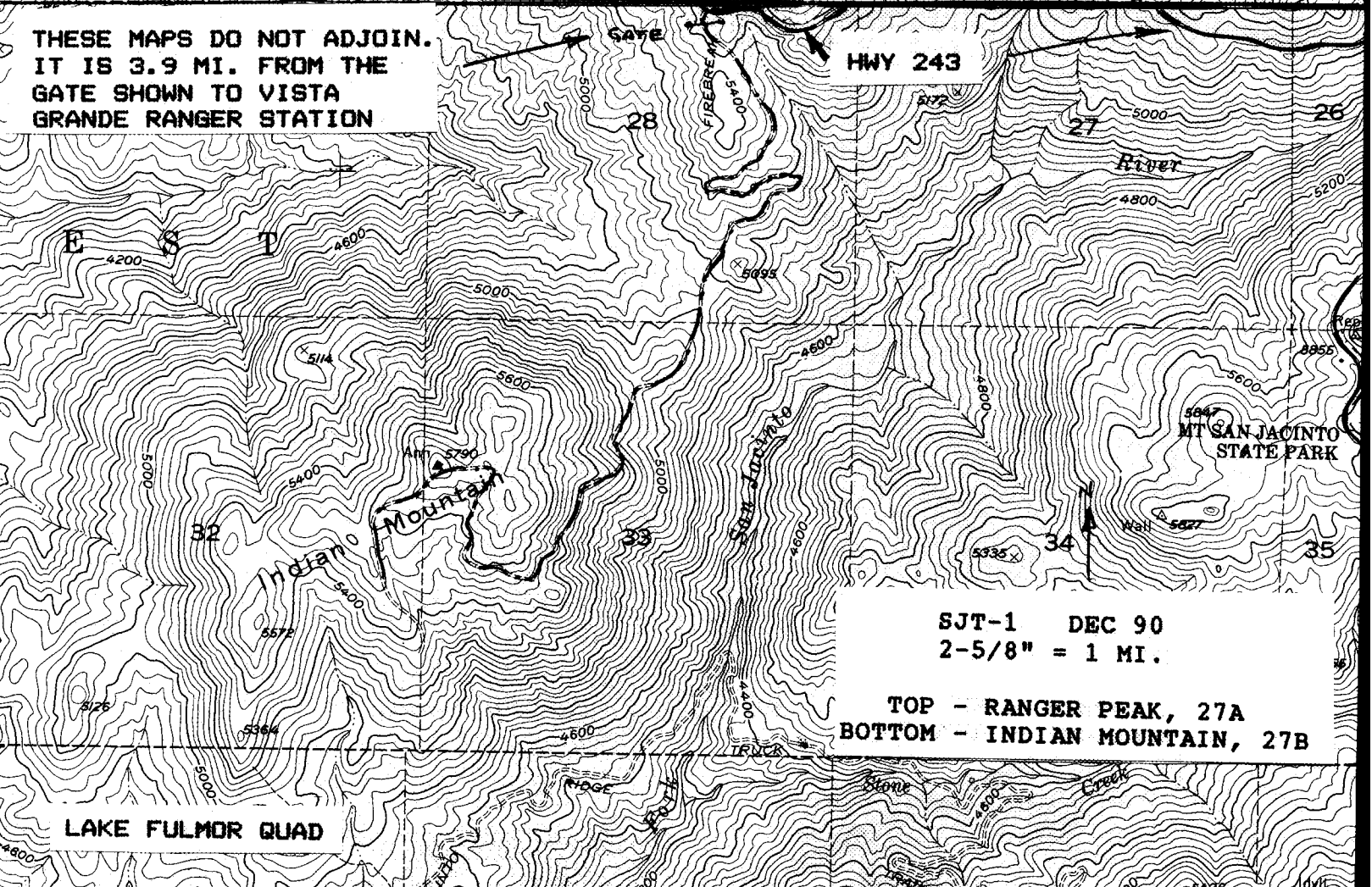


THESE MAPS DO NOT ADJOIN.
 IT IS 3.9 MI. FROM THE
 GATE SHOWN TO VISTA
 GRANDE RANGER STATION



SJT-1 DEC 90
 2-5/8" = 1 MI.

TOP - RANGER PEAK, 27A
 BOTTOM - INDIAN MOUNTAIN, 27B