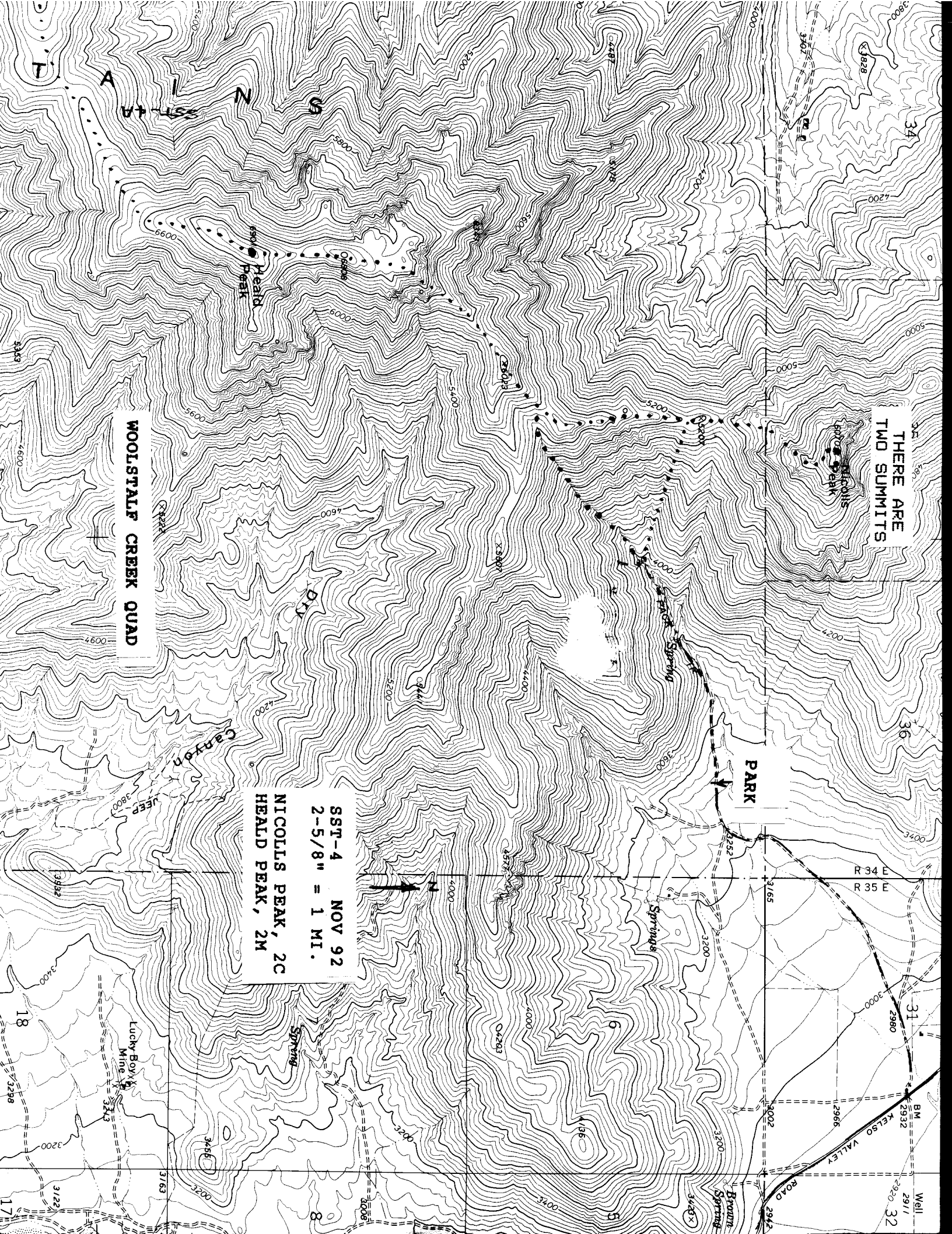


THERE ARE TWO SUMMITS

NICOLLS
6000' PEAK

WOOLSTAFF CREEK QUAD

NOV 92
SST-4
2-5/8" = 1 MI.
NICOLLS PEAK, 2C
HEALD PEAK, 2M



US
N
SST-4



R 34 E
R 35 E

T 17 N
T 18 N

Well

BM
2932

2911
2920
32

2966

3002

2942

3165

3002

2942

PARK

ROAD

Brown
Spring

Springs

Park Spring

O4263

4000

4400

4380

4200

3200

3200

3500

5400

4600

4200

4000

3000

3000

3500

5000

5600

4200

3800

3450

3000

3000

4500

4800

4200

3800

3450

3000

3000

4500

4800

4200

4000

3000

3000

3000

4500

4800

4200

3800

3450

3000

3000

4500

4800

4200

4000

3450

3000

3000

4500

4800

4200

4000

3450

3000

3000

4500

4800

4200

3800

3450

3000

3000

4500

4800

4200

3800

3000

3000

4500

4800

4200

3800

3000

3000

4500

4800

4200

3800

3000

3000

4500

4800

4200

3800

3000

-5 445 35 475" data-label="Text">

3000

-5 585 35 615" data-label="Text">

4500

-5 725 35 755" data-label="Text">

4800

-5 865 35 895" data-label="Text">

4200

-5 985 35 1000" data-label="Text">

3000