

116°13'00" W

116°12'00" W

116°11'00" W

WGS84 116°10'00" W

33°21'00" N

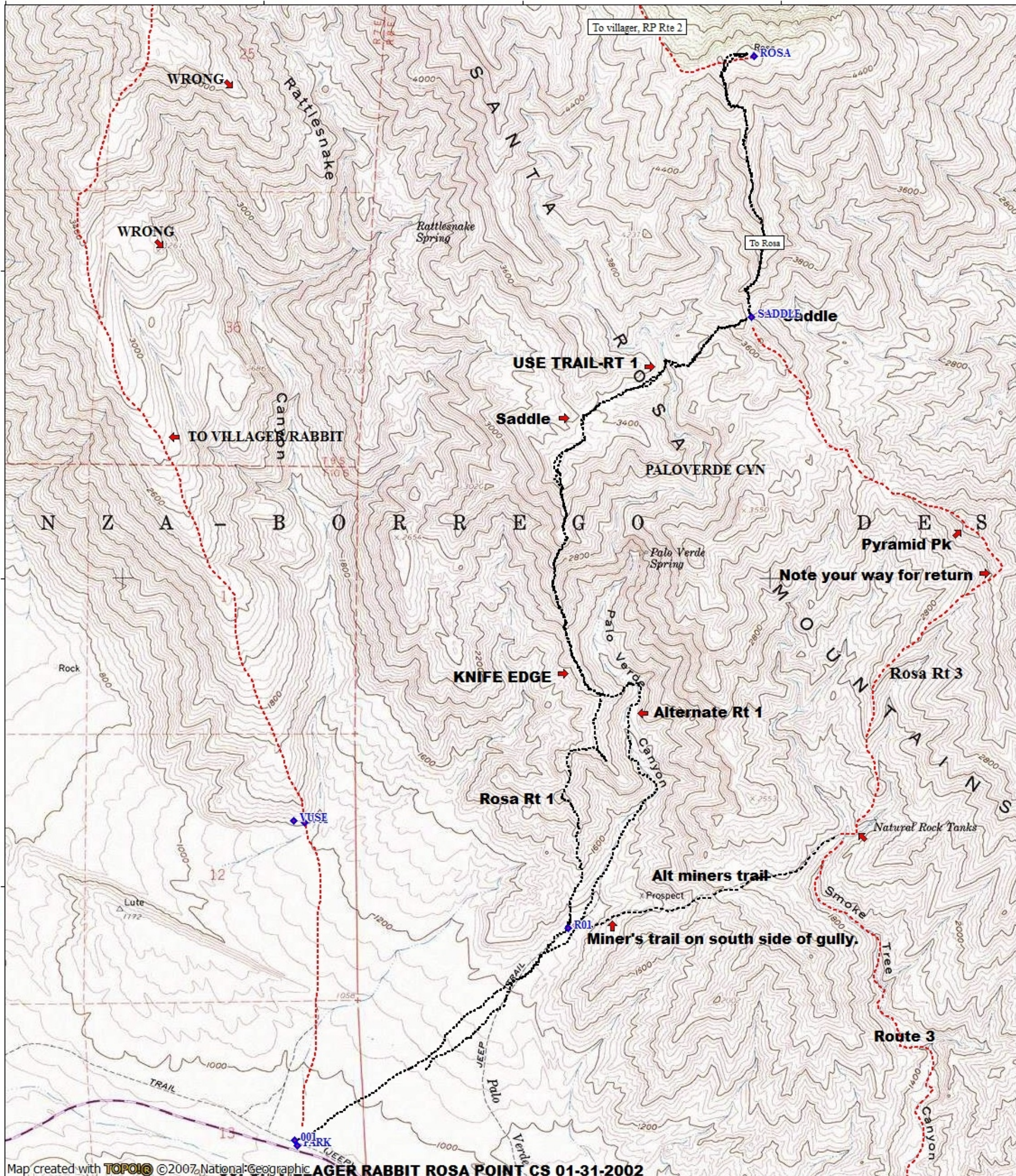
33°21'00" N

33°20'00" N

33°20'00" N

33°19'00" N

33°19'00" N



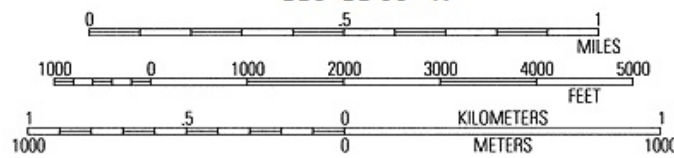
Map created with TOPO! © 2007 National Geographic VILLAGER RABBIT ROSA POINT CS 01-31-2002

116°13'00" W

116°12'00" W

116°11'00" W

WGS84 116°10'00" W



TN MN 11½°

02/23/17

116°14'00" W

116°13'00" W

WGS84 116°12'00" W

33°26'00" N

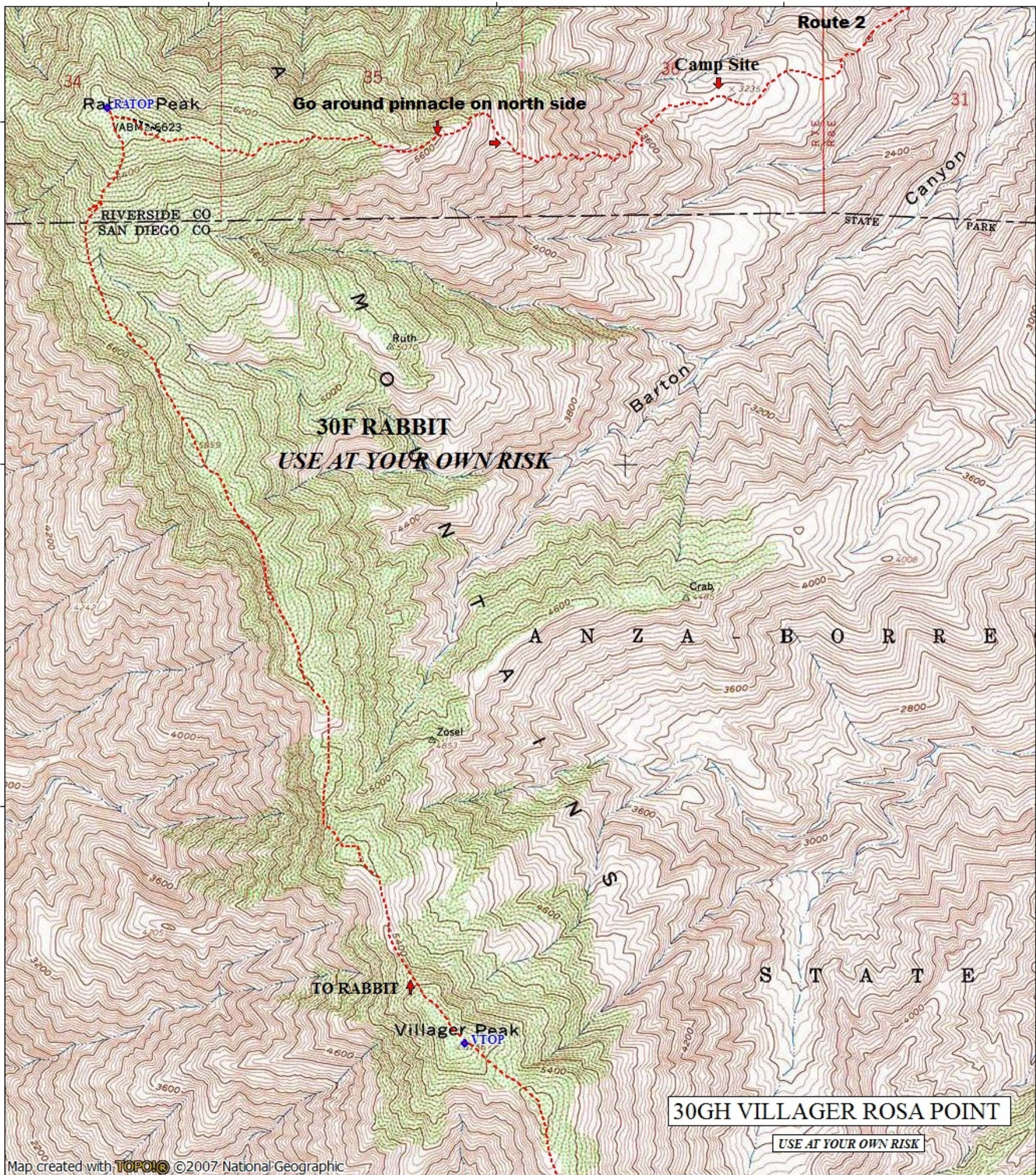
33°25'00" N

33°24'00" N

33°26'00" N

33°25'00" N

33°24'00" N

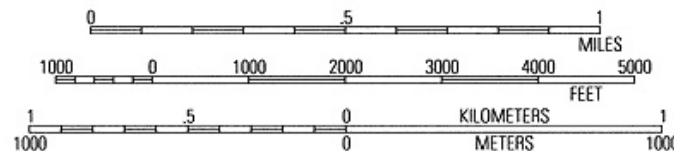


Map created with TOPO! ©2007 National Geographic

116°14'00" W

116°13'00" W

WGS84 116°12'00" W



TN MN  
11½°  
02/23/17

116°13'00" W

116°12'00" W

116°11'00" W

WGS84 116°10'00" W

TO RABBIT ↑

Villager Peak  
VTOP

30GH VILLAGER ROSA POINT

USE AT YOUR OWN RISK

TO VILLAGER/RABBIT

DOWN

Mile High Pk

VILLAGER TO ROSA POINT. RP RTE 2

WRONG →

Rattle

To villager, RP Rte 2

Rosa

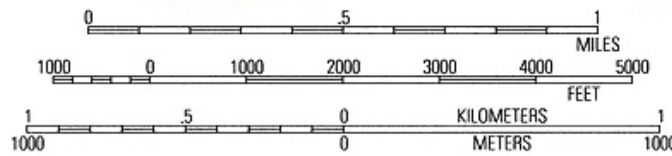
Map created with **TOPO!®** ©2007 National Geographic

116°13'00" W

116°12'00" W

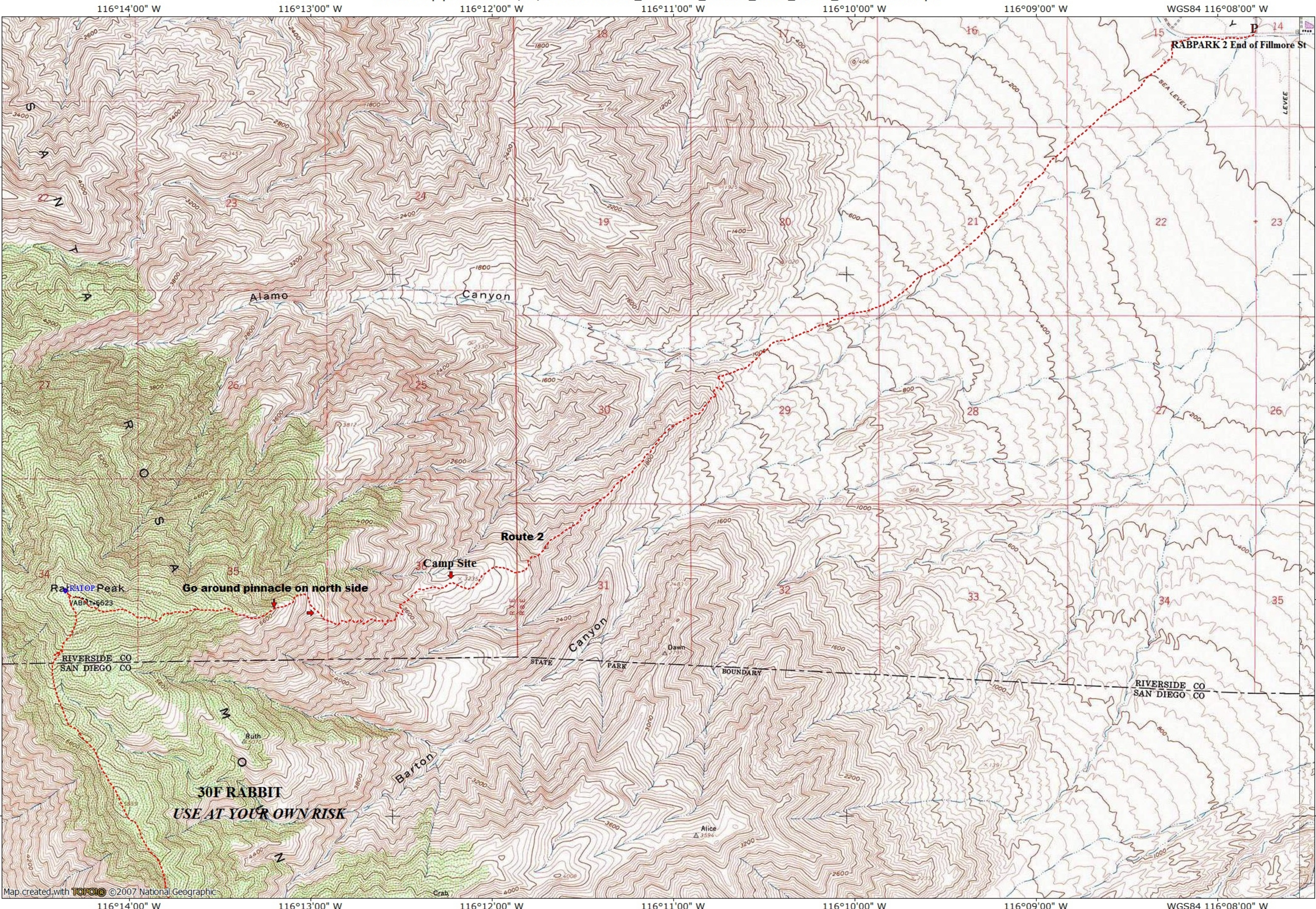
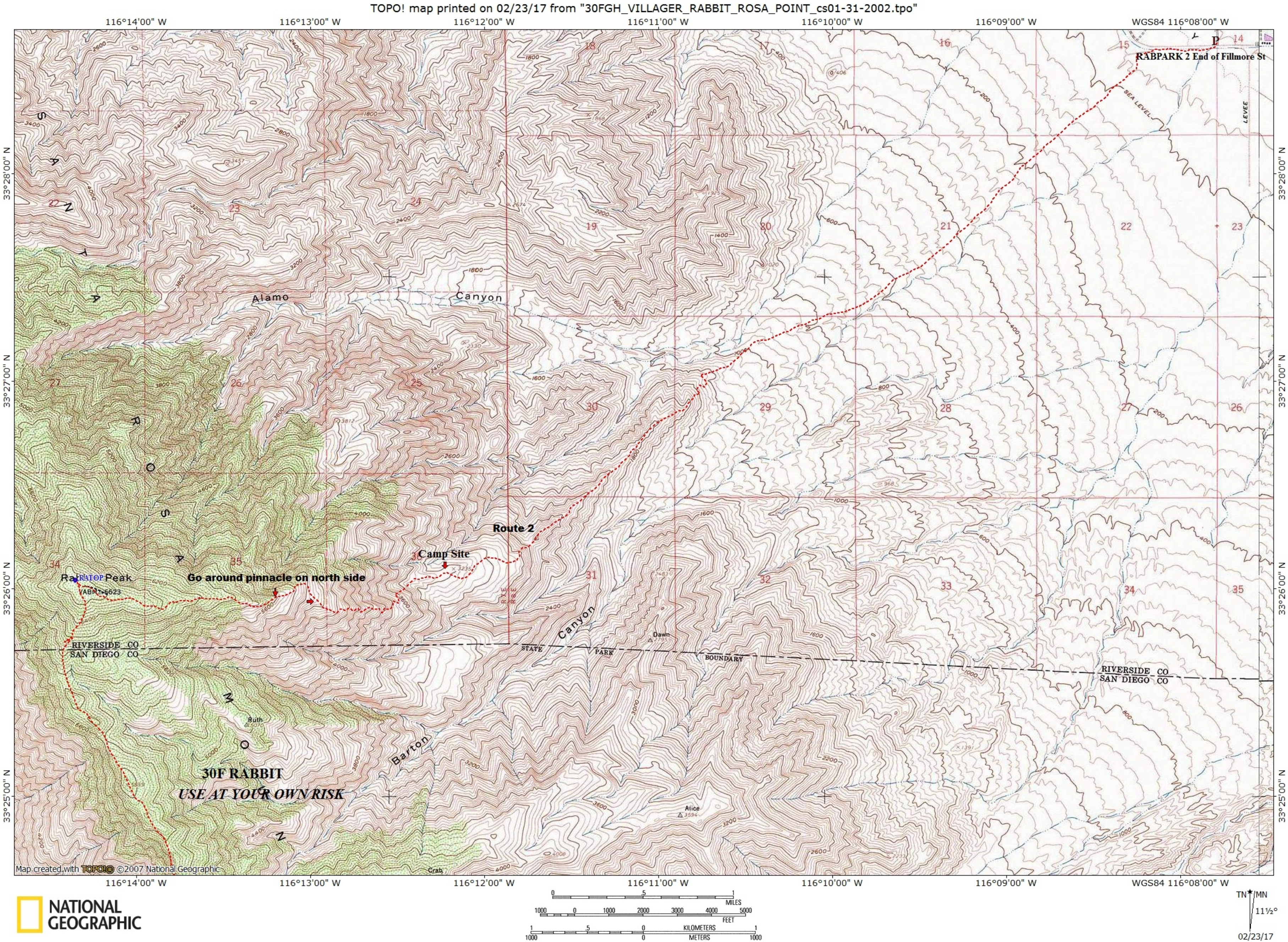
116°11'00" W

WGS84 116°10'00" W

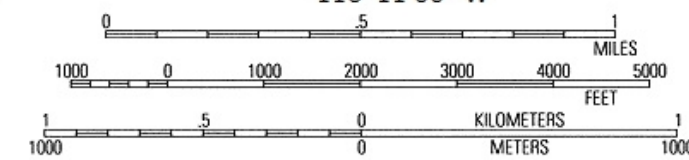


TN MN  
11½°

02/23/17



Map created with **TOPO!** ©2007 National Geographic



TN/MN  
11½°  
02/23/17